

The  
**QUEST**

For the

**KINGDOM**



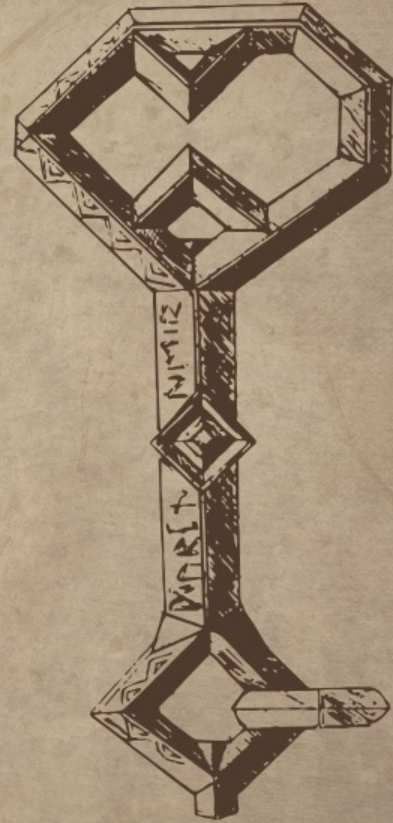


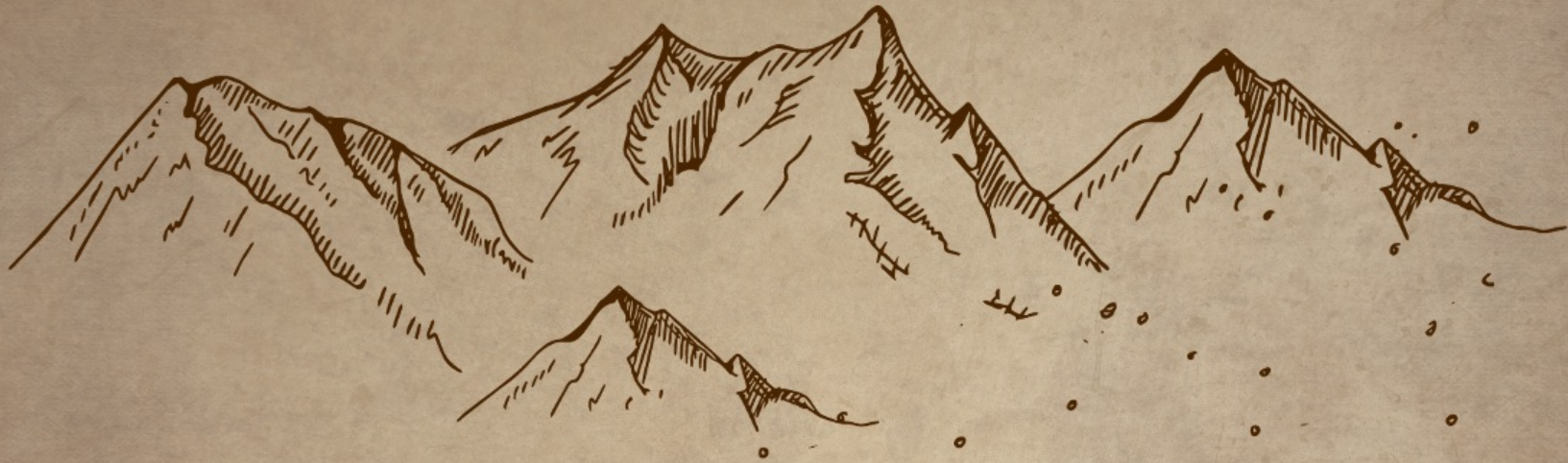
During Jesus' first coming  
the Kingdom of God was  
inaugurated but it will  
not be consummated until  
the King returns.



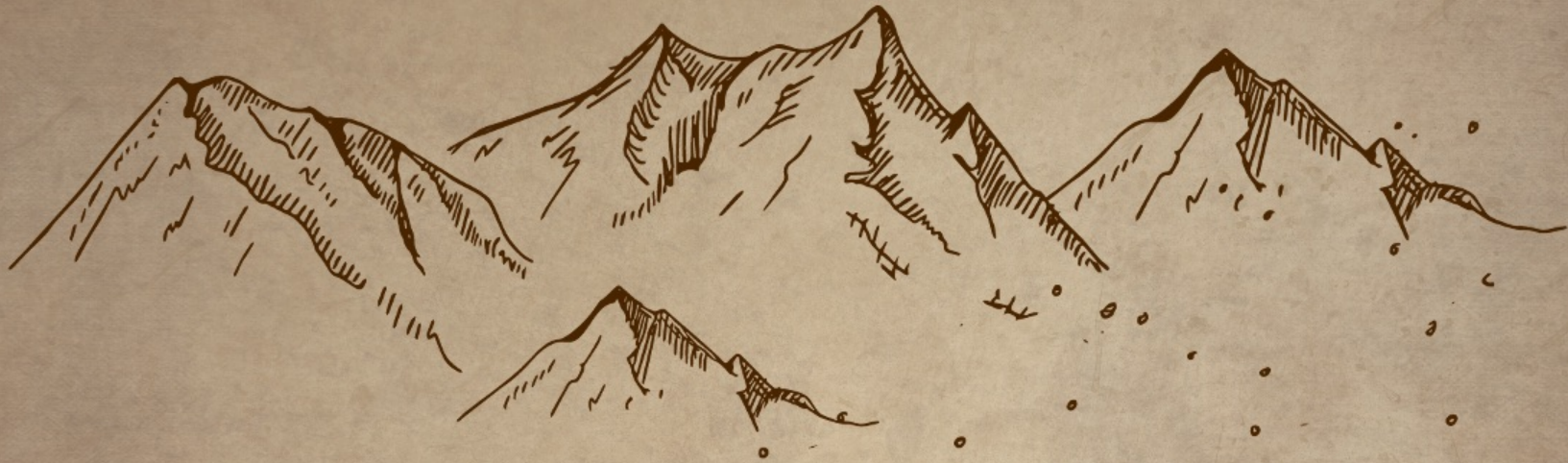
We long for the Kingdom of God  
to come and for the King to return.

Our lives are challenging  
at times because we live  
in the kingdom of this  
world while living under  
the reign of another.





**What is a kingdom?**



## What is a kingdom?

A kingdom is simply what realm you live in and what reign you live under.

How do we, as citizens of  
the Kingdom, keep our  
eyes fixed on the King  
with longing and hope  
until He returns?



## MATTHEW 13:3-8 NLT

---

<sup>3</sup>He told many stories in the form of parables, such as this one:

“Listen! A farmer went out to plant some seeds. <sup>4</sup>As he scattered them across his field, some seeds fell on a footpath, and the birds came and ate them. <sup>5</sup>Other seeds fell on shallow soil with underlying rock. The seeds sprouted quickly because the soil was

shallow. <sup>6</sup>But the plants soon wilted under the hot sun, and since they didn't have deep roots, they died.

<sup>7</sup>Other seeds fell among thorns that grew up and choked out the tender plants. <sup>8</sup>Still other seeds fell on fertile soil, and they produced a crop that was thirty, sixty, and even a hundred times as much as had been planted!

THREE SYMBOLS IN THIS PARABLE  
WE NEED TO BE AWARE OF:

# THREE SYMBOLS IN THIS PARABLE WE NEED TO BE AWARE OF:

Symbol of the farmer

# THREE SYMBOLS IN THIS PARABLE WE NEED TO BE AWARE OF:

Symbol of the farmer

Symbol of the seed

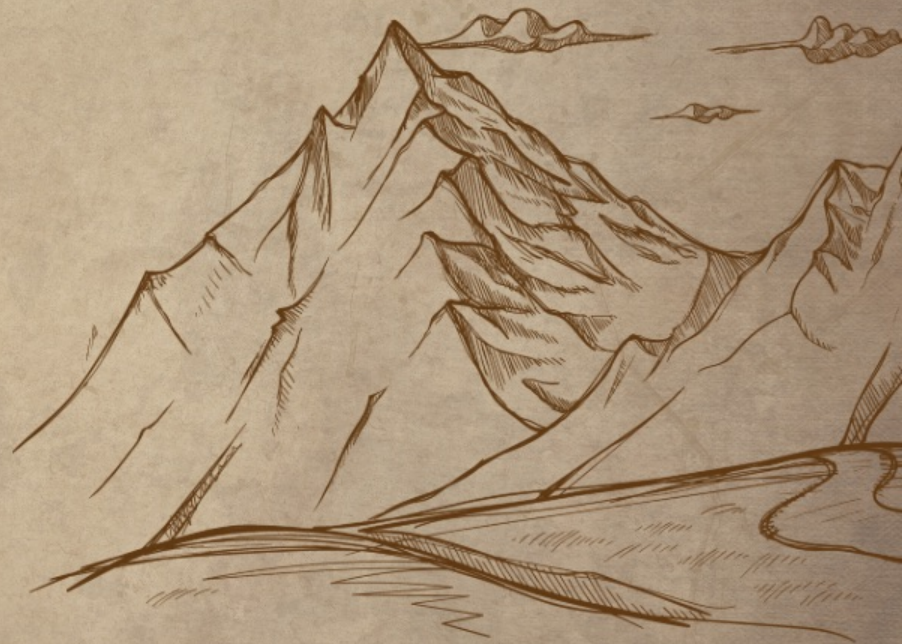
# THREE SYMBOLS IN THIS PARABLE WE NEED TO BE AWARE OF:

Symbol of the farmer

Symbol of the soils

Symbol of the seed

The condition of our soil  
—our hearts—  
determines our reception  
of the Kingdom.



LET'S LOOK AT EACH OF THESE SOILS  
OR HEART CONDITIONS:



# LET'S LOOK AT EACH OF THESE SOILS OR HEART CONDITIONS:

## The hardened heart

### MATTHEW 13:19 NLT

<sup>19</sup>The seed that fell on the footpath represents those who hear the message about the Kingdom and don't understand it. Then the evil one comes and snatches away the seed that was planted in their hearts.



# HEBREWS 3:15A NLT

---

<sup>15</sup> Remember what it says:

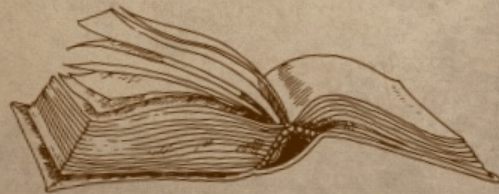
“Today when you hear his voice,  
don’t harden your hearts”

# LET'S LOOK AT EACH OF THESE SOILS OR HEART CONDITIONS:

## The shallow heart

### MATTHEW 13:20-21 NLT

<sup>20</sup>The seed on the rocky soil represents those who hear the message and immediately receive it with joy. <sup>21</sup>But since they don't have deep roots, they don't last long. They fall away as soon as they have problems or are persecuted for believing God's word.



# LET'S LOOK AT EACH OF THESE SOILS OR HEART CONDITIONS:

## The crowded heart

### MATTHEW 13:22 NLT

<sup>22</sup>The seed that fell among the thorns represents those who hear God's word, but all too quickly the message is crowded out by the worries of this life and the lure of wealth, so no fruit is produced.





The worries and the wealth of this life are distracting us from living under the rule of Jesus.

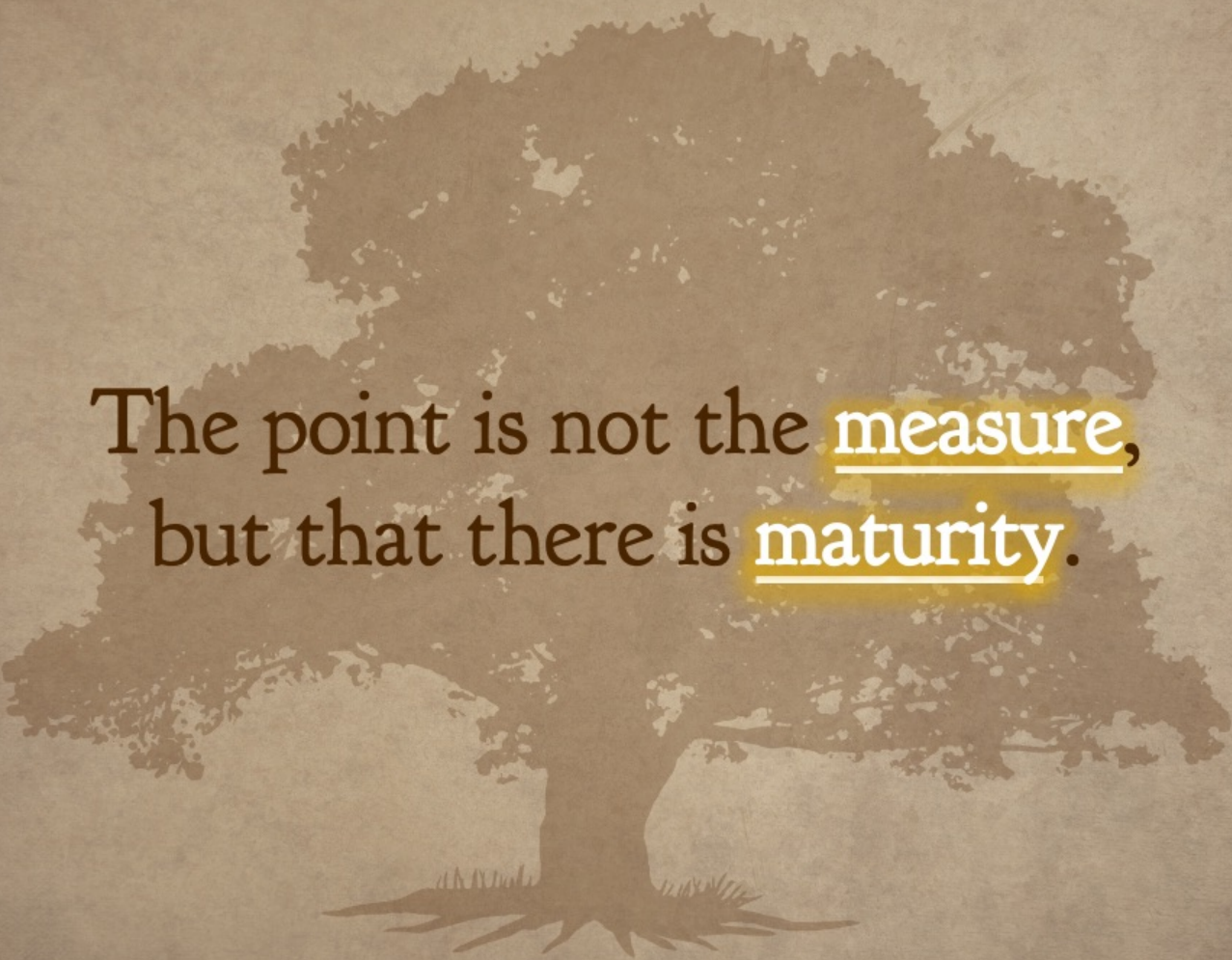
# LET'S LOOK AT EACH OF THESE SOILS OR HEART CONDITIONS:

The fruitful heart

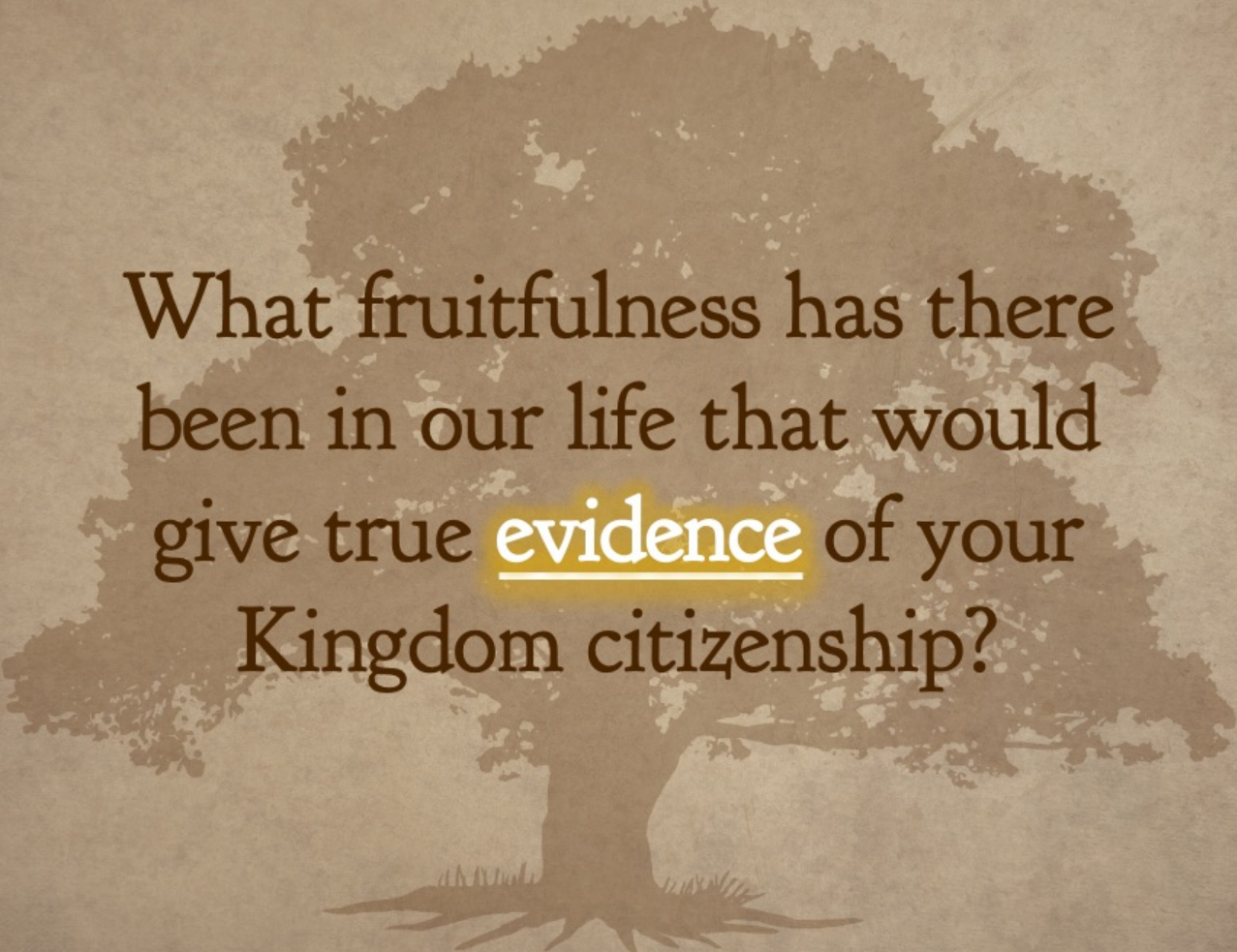
MATTHEW 13:23 NLT

<sup>23</sup>“The seed that fell on good soil represents those who truly hear and understand God’s word and produce a harvest of thirty, sixty, or even a hundred times as much as had been planted!”





The point is not the measure,  
but that there is maturity.



What fruitfulness has there  
been in our life that would  
give true evidence of your  
Kingdom citizenship?

FRUIT IN THE KINGDOM MANIFESTS  
ITSELF IN THREE WAYS:

1

2

3

# FRUIT IN THE KINGDOM MANIFESTS ITSELF IN THREE WAYS:

1

2

3

Internal Fruit

# FRUIT IN THE KINGDOM MANIFESTS ITSELF IN THREE WAYS:

1

2

3

Internal Fruit

External Fruit

# FRUIT IN THE KINGDOM MANIFESTS ITSELF IN THREE WAYS:

1

2

3

Internal Fruit

External Fruit

Eternal Fruit



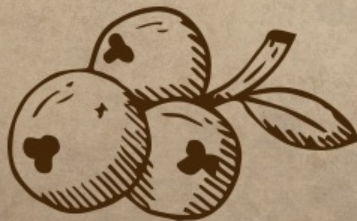
HOW DO I GET THAT KIND OF FRUIT  
IN MY LIFE?

# HOW DO I GET THAT KIND OF FRUIT IN MY LIFE?

## JOHN 15:5 NLT

<sup>5</sup>“Yes, I am the vine; you are the branches. Those who remain in me, and I in them, will produce much fruit. For apart from me you can do nothing.”

Stay connected  
to Jesus.



# HOW DO I GET THAT KIND OF FRUIT IN MY LIFE?

## JOHN 16:13 NLT

<sup>13</sup>When the Spirit of truth comes, he will guide you into all truth.

Listen to the leading  
of the Holy Spirit.



# HOW DO I GET THAT KIND OF FRUIT IN MY LIFE?

JOSHUA 24:15 NLT

...choose today whom you will serve...But as for me  
and my family, we will serve the Lord.

Harvest carefully  
yourself.



We need to make the  
decision every day to live as  
Kingdom citizens.

