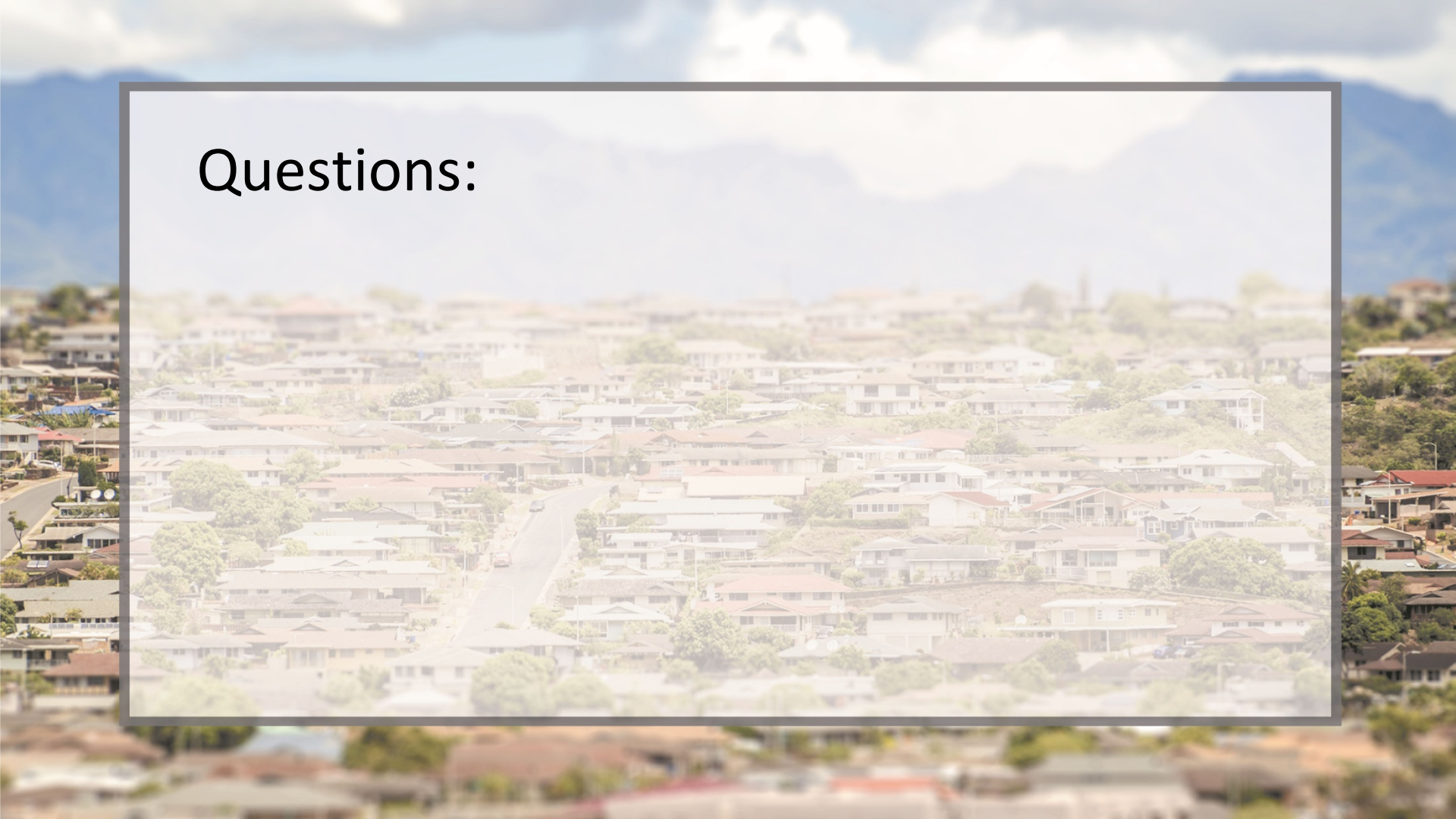


An aerial photograph of a densely populated suburban neighborhood. The houses are mostly two-story structures with various roof colors, including brown, grey, and blue. The houses are arranged in a grid-like pattern with winding streets. In the background, there are blue mountains under a sky with scattered white clouds. The overall scene is bright and clear.

Wont' You Be a Neighbor?

Mark 12:28-31 NLT
April 8, 2018

Questions:



Questions:

1. Write the names of each neighbor you know in the corresponding house.

Questions:

1. Write the names of each neighbor you know in the corresponding house.
2. Write basic information about who lives there.

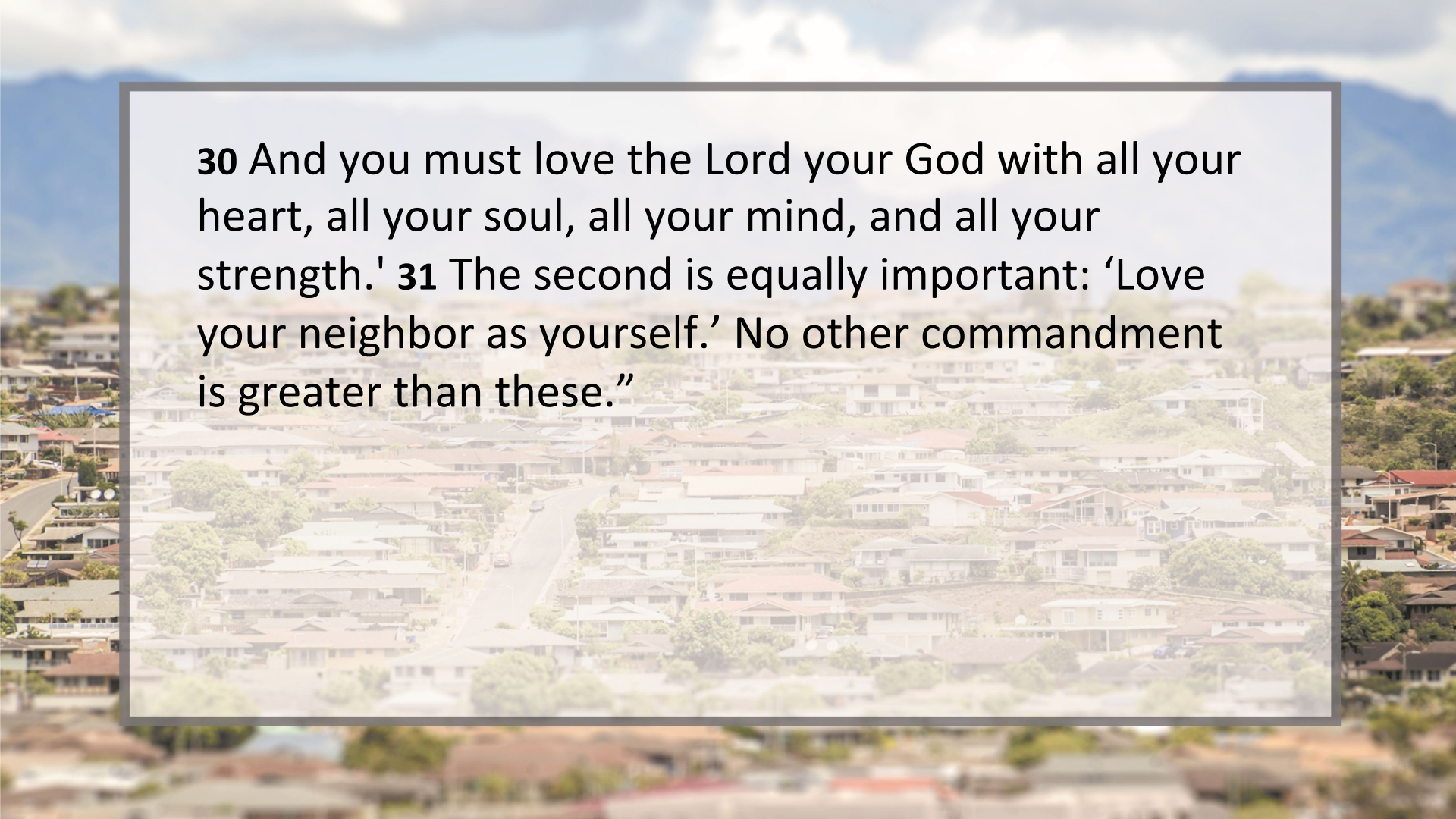
Questions:

1. Write the names of each neighbor you know in the corresponding house.
2. Write basic information about who lives there.
3. Write more personal information about who lives there.

Mark 12:28-31 NLT

28 One of the teachers of religious law was standing there listening to the debate. He realized that Jesus had answered well, so he asked, “Of all the commandments, which is the most important?”

29 Jesus replied, “The most important commandment is this: ‘Listen, O Israel! The Lord our God is the one and only Lord.

An aerial photograph of a suburban neighborhood with a road winding through it, overlaid with a semi-transparent text box. The houses are mostly single-story with light-colored roofs, and there are trees scattered throughout. In the background, there are mountains under a cloudy sky.

30 And you must love the Lord your God with all your heart, all your soul, all your mind, and all your strength.' **31** The second is equally important: 'Love your neighbor as yourself.' No other commandment is greater than these."

An aerial photograph of a suburban neighborhood with numerous houses and a winding road. The image is semi-transparent, allowing the text to be clearly visible. In the background, there are mountains under a cloudy sky.

Leviticus 19:18 ESV

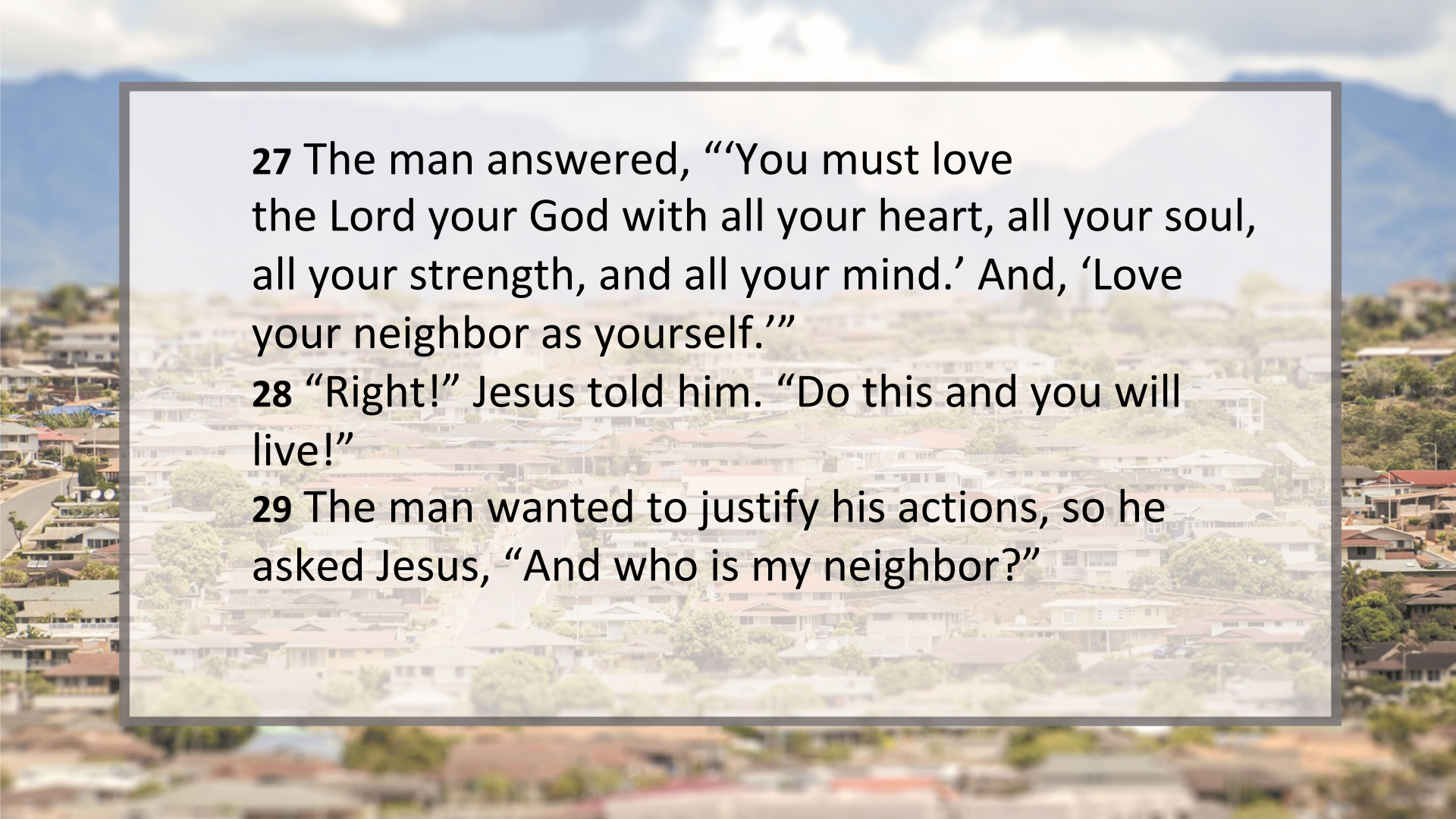
18 You shall not take vengeance or bear a grudge against the sons of your own people, but you shall love your neighbor as yourself: I am the Lord.

I. **Who** is my **neighbor**?

Luke 10:25-29 NLT

25 One day an expert in religious law stood up to test Jesus by asking him this question: “Teacher, what should I do to inherit eternal life?”

26 Jesus replied, “What does the law of Moses say? How do you read it?”



27 The man answered, ““You must love the Lord your God with all your heart, all your soul, all your strength, and all your mind.’ And, ‘Love your neighbor as yourself.’”

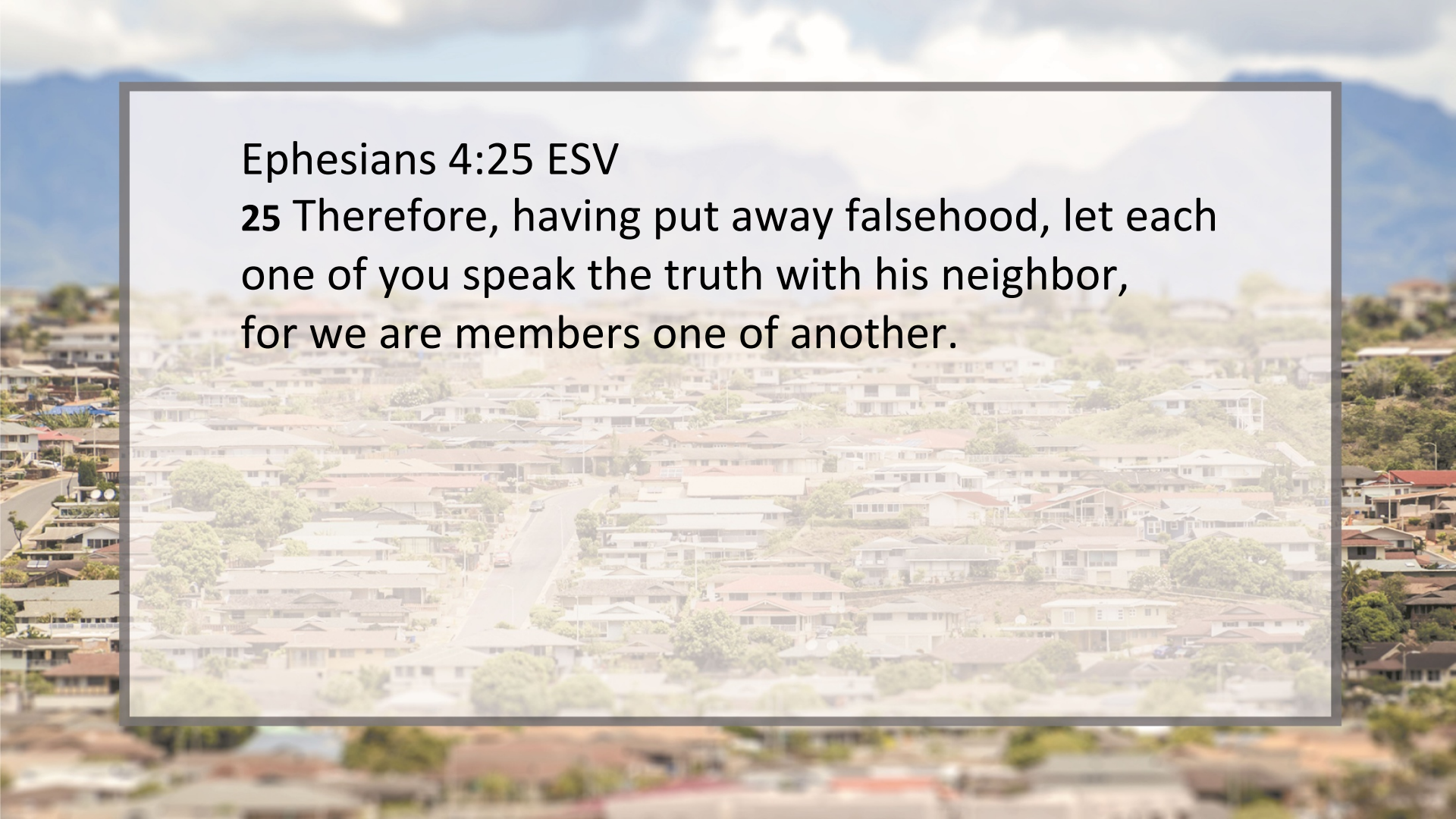
28 “Right!” Jesus told him. “Do this and you will live!”

29 The man wanted to justify his actions, so he asked Jesus, “And who is my neighbor?”

II. How do I love my neighbor?

Romans 15:1-2 ESV

1 We who are strong have an obligation to bear with the failings of the weak, and not to please ourselves. **2** Let each of us please his neighbor for his good, to build him up.

An aerial photograph of a suburban neighborhood with numerous houses and a winding road. The image is semi-transparent, allowing the text to be clearly visible. In the background, there are mountains under a cloudy sky.

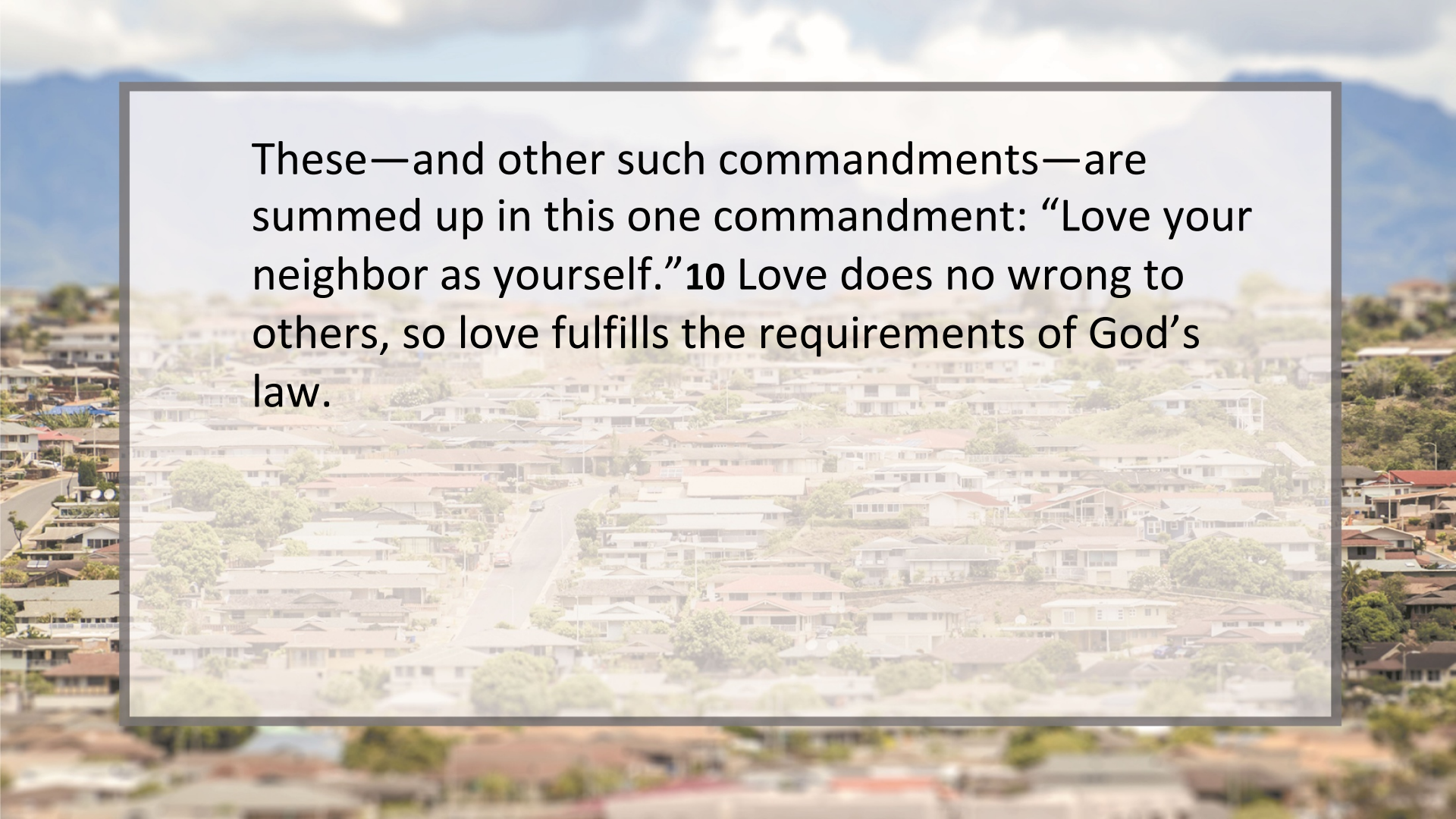
Ephesians 4:25 ESV

25 Therefore, having put away falsehood, let each one of you speak the truth with his neighbor, for we are members one of another.

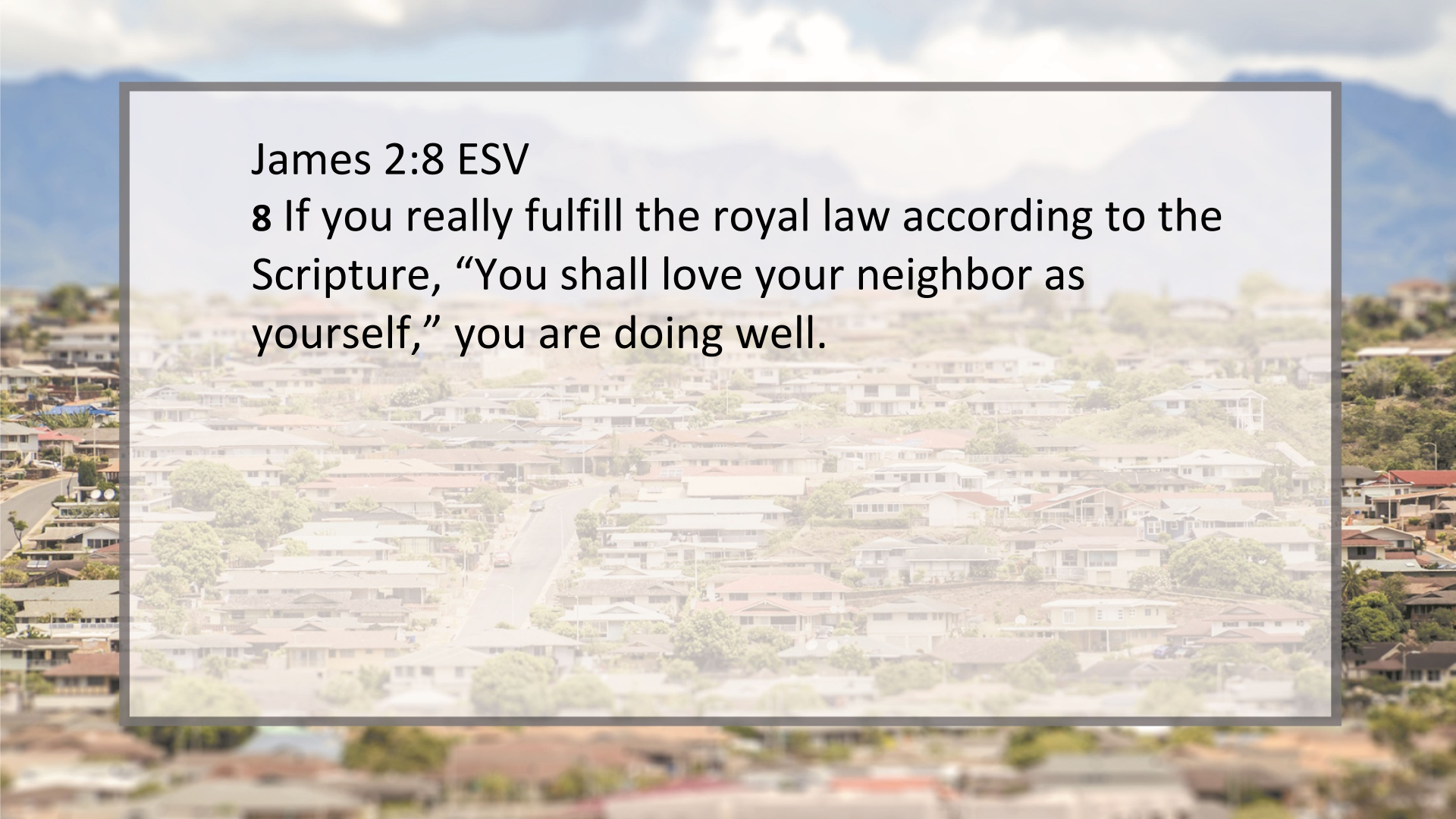
III. Why should I love my neighbor?

Romans 13:8-10 NLT

8 Owe nothing to anyone—except for your obligation to love one another. If you love your neighbor, you will fulfill the requirements of God's law. 9 For the commandments say, "You must not commit adultery. You must not murder. You must not steal. You must not covet."

An aerial photograph of a suburban neighborhood with numerous houses and a winding road. A semi-transparent white text box is overlaid on the image, containing the following text:

These—and other such commandments—are summed up in this one commandment: “Love your neighbor as yourself.”¹⁰ Love does no wrong to others, so love fulfills the requirements of God’s law.

An aerial photograph of a suburban neighborhood with many houses and a winding road. The image is semi-transparent, allowing a text box to be overlaid. The text box has a dark border and contains the following text:

James 2:8 ESV

8 If you really fulfill the royal law according to the Scripture, “You shall love your neighbor as yourself,” you are doing well.

An aerial photograph of a suburban neighborhood with numerous houses and a winding road. The image is slightly blurred and has a semi-transparent white text box overlaid in the center. The text box has a thin grey border. The background shows a mix of greenery and residential buildings under a bright sky with some clouds.

1 John 4:7-8 NLT

7 Dear friends, let us continue to love one another, for love comes from God. Anyone who loves is a child of God and knows God. 8 But anyone who does not love does not know God, for God is love.